

Tracking Equities

EB <Go>

displays the consensus estimates for a selected equity, along with the individual analyst estimates that make up the consensus.

EAG <Go>

graphs seasonal price patterns of a selected security.

IMAP <Go>

displays a market heatmap that lets you compare sectors and regions by selected metrics such as price-earnings ratios.

V <Go>

lets you compare a selected company's fundamentals with those of its peers.

QS <Go>

lets you screen for stocks that match criteria you specify.

PCA <Go>

lets you graph historical corporate events for a selected company.

IGF <Go>

lets you graph and compare trends in fundamental data for as many as four securities and indexes.

S <Go>

lets you graph the historical price spread and price ratios of two selected securities for a specific period.

PGEO <Go>

displays data on the segmentation of a selected company's fundamentals by product, brand and geographic location.

ESCO <Go>

lets you rank securities according to criteria you specify.

MOST <Go>

displays the most-active stocks by volume or the day's biggest gainers or decliners.

EVTS <Go>

displays information on corporate events for a variety of companies.

GF <Go>

displays up to four line graphs of price and fundamental data for a security.

MGR <Go>

lets you graph up to eight securities as ratios of a base index to compare relative performance.

GPTR <Go>

graphs historical insider transactions for a selected security.

GR <Go>

lets you graph historical price or yield ratios for two selected securities.

VBAR <Go>

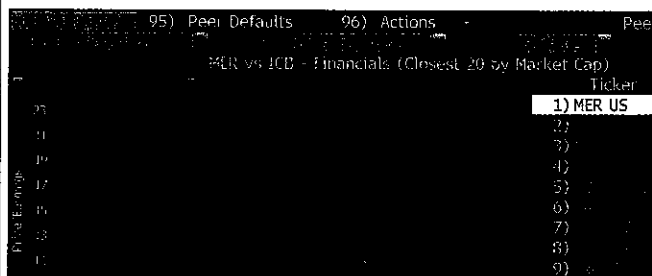
displays volume-at-price data for a selected stock as histograms.

COMP <Go>

lets you compare the returns of a selected security with its benchmark index or industry group (if available), or with two other selected securities and indexes.

PVH <Go>

lets you chart the historical trend of a company's key financial metrics relative to its peer group, associated market index and specific companies within its peer group.



TRA <Go>

lets you calculate the total return for a selected equity over a specified period.

SI <Go>

shows monthly short interest information for a selected U.S. or Canadian stock.

ECCG <Go>

graphs option-implied volatility, credit default swap spreads and stock prices for a selected company.

IVAT <Go>

lets you analyze volume-at-time patterns for a selected security.

WEI <Go>

monitors major equity indexes from around the world.

HDS <Go>

displays a list of holders of a selected stock.

BETA <Go>

lets you analyze a selected stock's beta, a measure of the change in its price relative to a change in the broader market.

Compiled by **SIMONE GORRINDO**